



Edgewood Office Condos

5360 EDGEWOOD DRIVE, MOUNDS VIEW, MN 55112

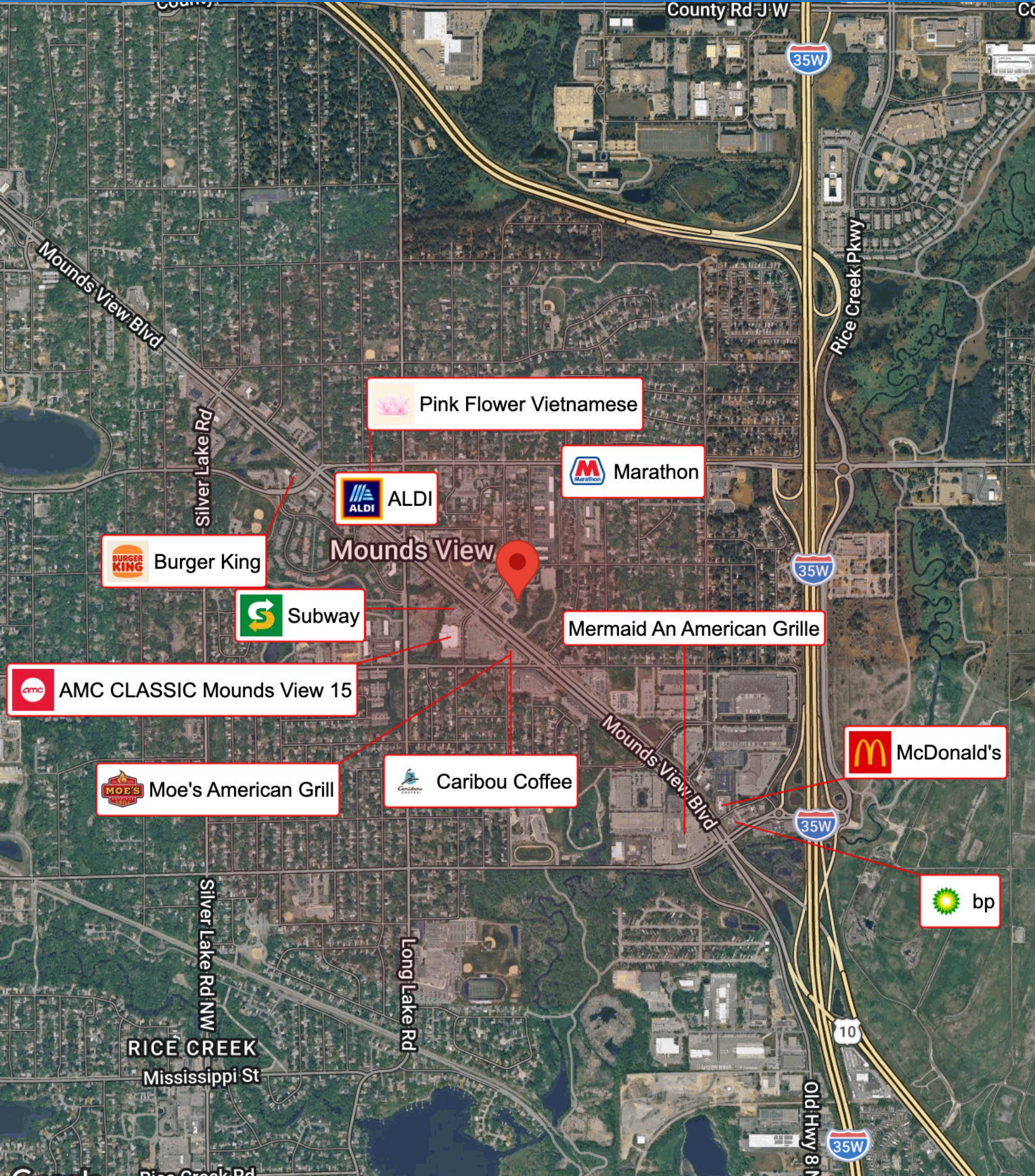
- 1,550 SF AVAILABLE
- PROMINENT MAIN FLOOR SUITE
- IDEAL FOR PROFESSIONAL OFFICE, MEDICAL, OR SERVICE
- ILLUMINATED MONUMENT SIGNAGE AVAILABLE
- ATTRACTIVE ENTRANCE AND SPECTACULAR AESTHETIC APPEAL
- OFFICE NET RENT: \$14.50
- 2026 ESTIMATED OPERATING EXPENSE: \$9.05 (EXCLUDES: GAS, ELECTRIC, AND CLEANING OF THE PREMISES)
- AREA AMENITIES INCLUDE: NUMEROUS RETAIL STORES, RESTAURANTS, AN AMC MOVIE THEATER, AND GAS STATIONS

CONTACT:

JEFF NORDNESS
jeff@essencerealestate.com
(651) 341-5044

BUSINESS MAP

5360 Edgewood Drive, Mounds View, MN 55112



 Pink Flower Vietnamese


 Marathon

 ALDI

 Burger King

 Subway

Mermaid An American Grille

 AMC CLASSIC Mounds View 15

 Moe's American Grill

 Caribou Coffee

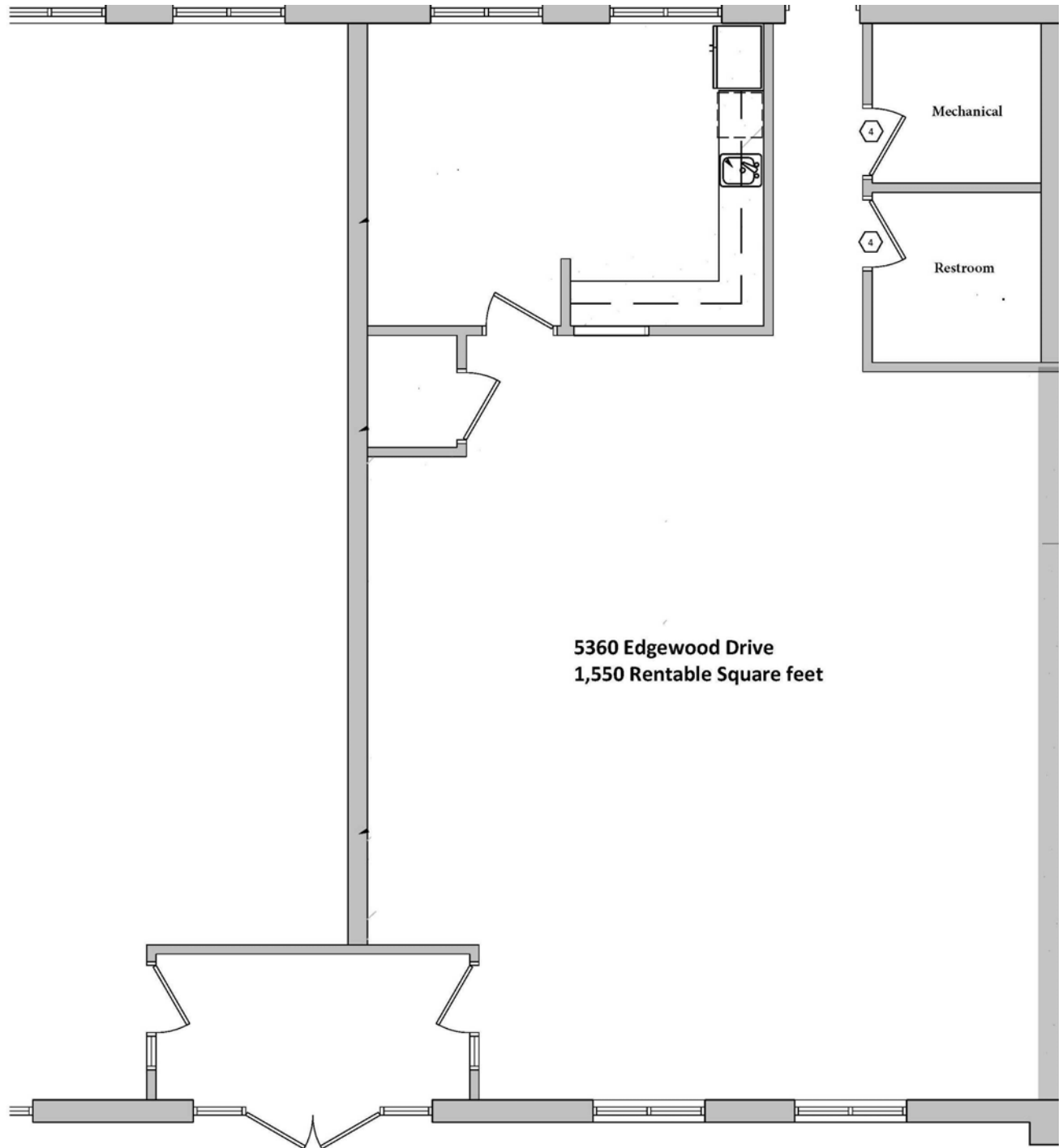
 McDonald's

 bp

FLOOR PLAN

5360 Edgewood Drive, Mounds View, MN 55112

THE ESTIMATED MONTHLY COST FOR 1,550 SF IS \$3,042.00



5360 Edgewood Drive
1,550 Rentable Square feet

ERSI

ESSENCE
REAL ESTATE
SERVICES, INC.

3 COMMERCIAL REAL ESTATE SINCE 1990

JEFF NORDNESS

jeff@essencerealestate.com

(651) 341-5044