



SHOREVIEW OFFICE PARK

1000 WEST COUNTY ROAD E, SHOREVIEW, MN 55112

- SUITE 115: 649 SF
- SUITE 135: 1,038 SF
- PERFECT FOR PROFESSIONAL OFFICE, MEDICAL, OR SERVICE
- SHARED CONFERENCE ROOM
- AMPLE ON-SITE PARKING
- LOCATED WEST OF LEXINGTON AVENUE AND SOUTH OF I-694
- OFFICE NET RENT: \$13.40 SF
- 2024 ESTIMATED OPERATING EXPENSE: \$9.70 SF
- MANY AREA AMENITIES INCLUDING: CARIBOU COFFEE, YMCA, TARGET, NUMEROUS OTHER RETAIL STORES, AND RESTAURANTS

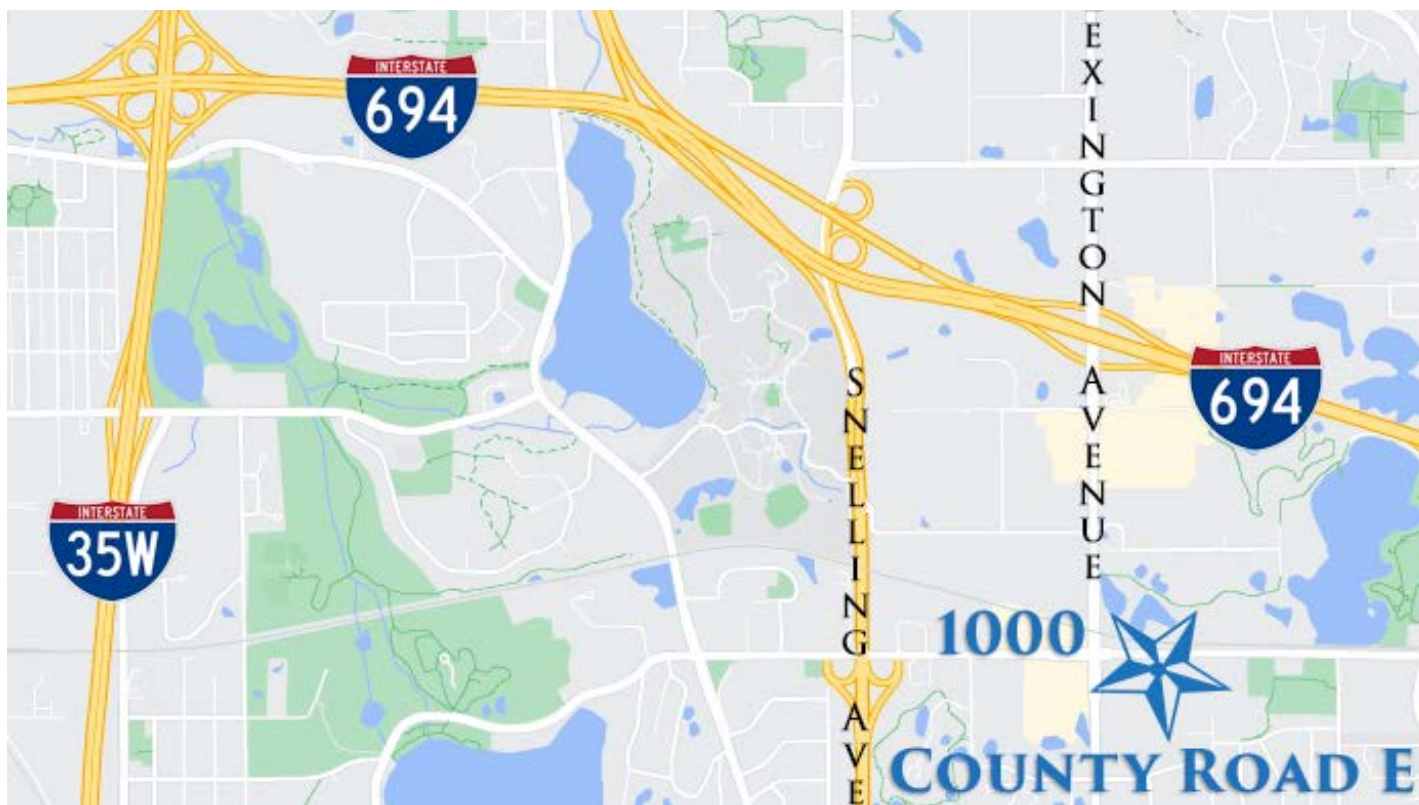
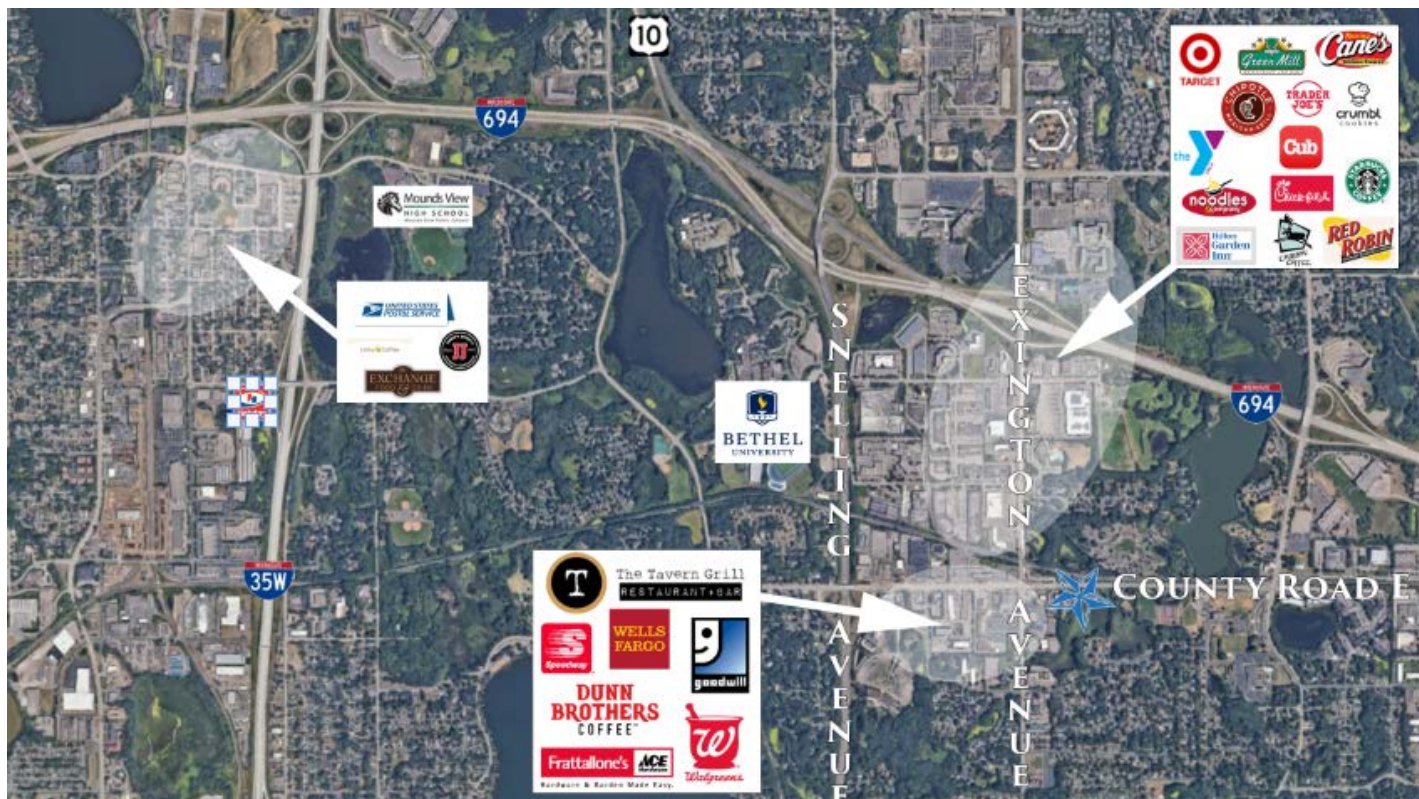
CONTACT:

WWW.ESSENCEREALESTATE.COM

JEFF NORDNESS
jeff@essencerealestate.com
(651) 341-5044

SHOREVIEW OFFICE PARK

1000 West County Road E, Shoreview, MN 55112



ERSI

ESSENCE
REAL ESTATE
SERVICES, INC.

COMMERCIAL REAL ESTATE SINCE 1990

JEFF NORDNESS

jeff@essencerealestate.com

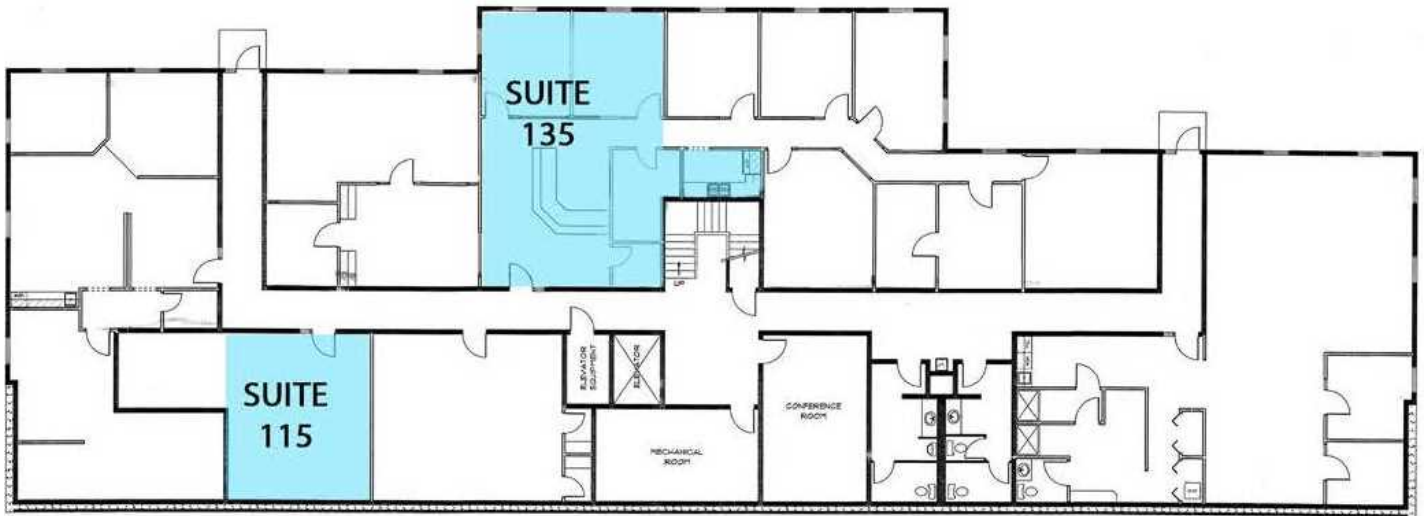
(651) 341-5044

FLOOR PLAN

1000 West County Road E, Shoreview, MN 55112

THE ESTIMATED MONTHLY COST FOR SUITE 115 IS \$1,250.00

THE ESTIMATED MONTHLY COST FOR SUITE 135 IS \$1,999.00



LOWER LEVEL

ERSI

ESSENCE
REAL ESTATE
SERVICES, INC.

3 COMMERCIAL REAL ESTATE SINCE 1990

JEFF NORDNESS

jeff@essencerealestate.com

(651) 341-5044