



1900 - 7TH STREET NORTHWEST

1900 7TH STREET NORTHWEST, NEW BRIGHTON, MN 55112

- 693 SF AVAILABLE
- \$18.00 SF GROSS RENT
- LOCATED JUST OFF OF HWY. I-694 AND SILVER LAKE ROAD
- SPACE IN NEW BRIGHTON CHURCH
- PERFECT FOR SMALL OFFICE, GROUP, OR CLASSROOM
- AREA AMENITIES INCLUDE: COFFEE SHOPS, GAS STATIONS, RETAIL, RESTAURANTS, AND GROCERY

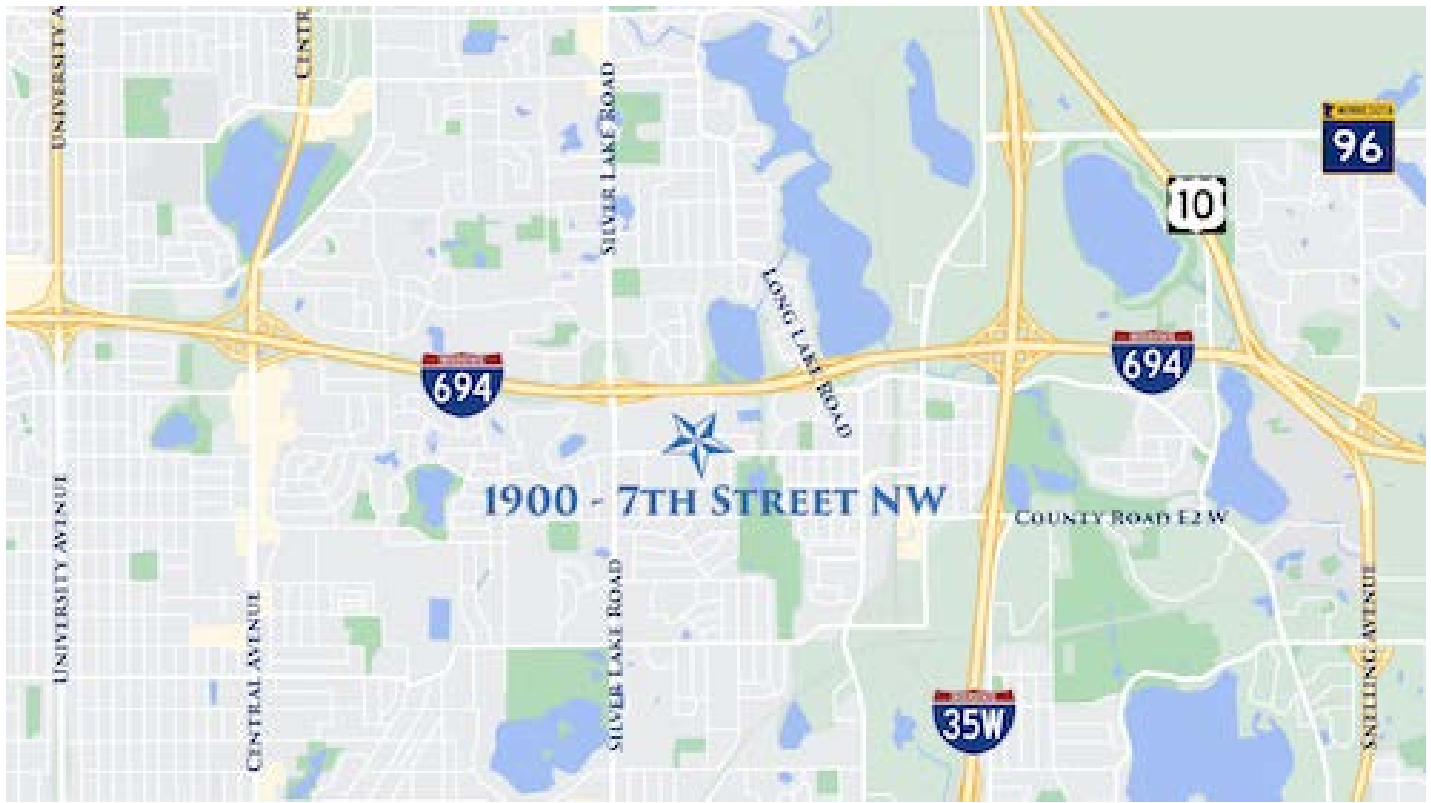
CONTACT:

WWW.ESSENCEREALESTATE.COM

JEFF NORDNESS
jeff@essencerealestate.com
(651) 341-5044

MAP VIEWS

1900 7th Street Northwest, New Brighton, MN 55112



ERSI

ESSENCE
REAL ESTATE
SERVICES, INC.

COMMERCIAL REAL ESTATE SINCE 1990

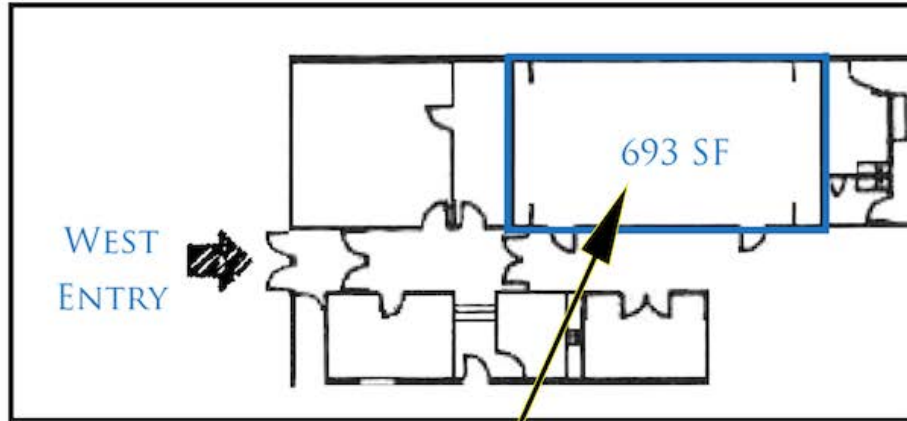
JEFF NORDNESS

jeff@essencerealestate.com

(651) 341-5044

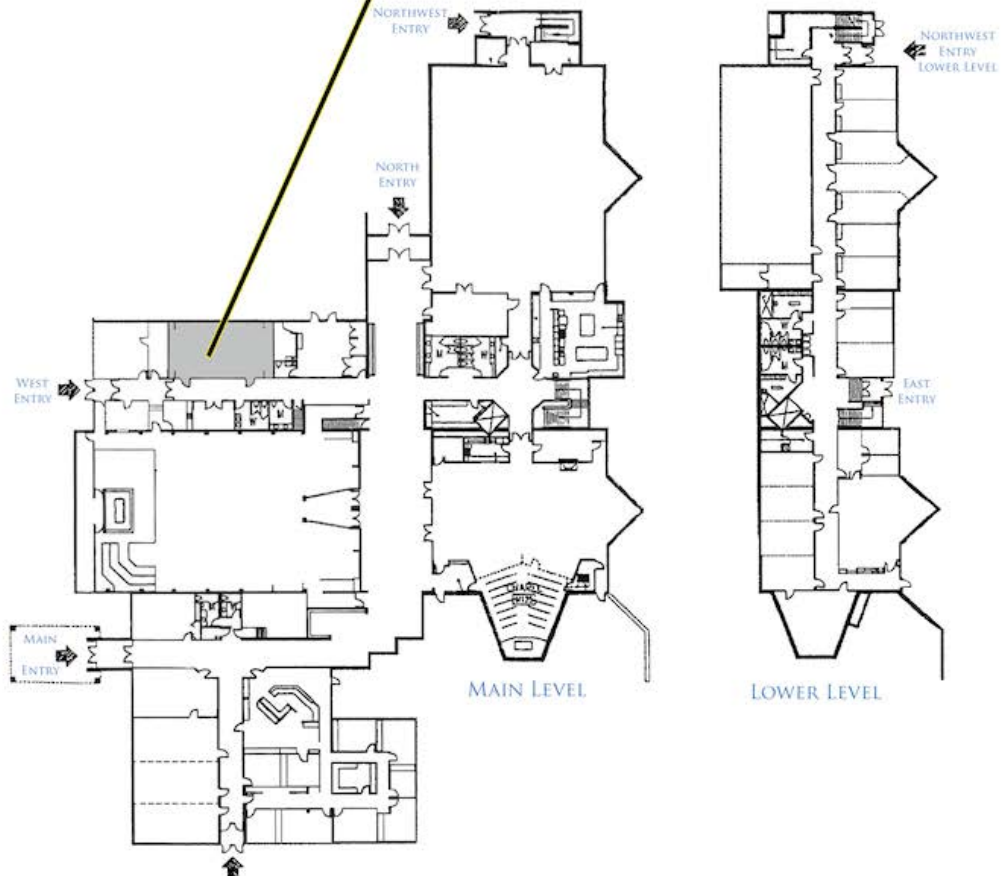
FLOOR PLAN

1900 7th Street Northwest, New Brighton, MN 55112



APPROX.
\$1,040.00
A MONTH

SMALL OFFICE
SPACE AVAILABLE
INSIDE A NEW
BRIGHTON
CHURCH



ERSI

ESSENCE
REAL ESTATE
SERVICES, INC.

COMMERCIAL REAL ESTATE SINCE 1990

JEFF NORDNESS

jeff@essencerealestate.com

(651) 341-5044