



LONDON SQUARE

219-223 LITTLE CANADA ROAD EAST, LITTLE CANADA, MN 55117

- BUILDING 219, SUITE 210: 1,187 SF AVAILABLE
- BUILDING 223, SUITE 200: 3,750 SF AVAILABLE
- ENTIRE 2ND FLOOR IN BLDG. 223: 6,150 SF AVAILABLE
- SHARED CONFERENCE ROOM
- OFFICE GROSS RENT: \$16.50 SF
- AMPLE PARKING
- GREAT ACCESS TO I-694, I-35E, AND HIGHWAY 36
- MANY AREA AMENITIES INCLUDING: GAS STATIONS, RESTAURANTS, CARIBOU COFFEE, FAST FOOD, AND MORE

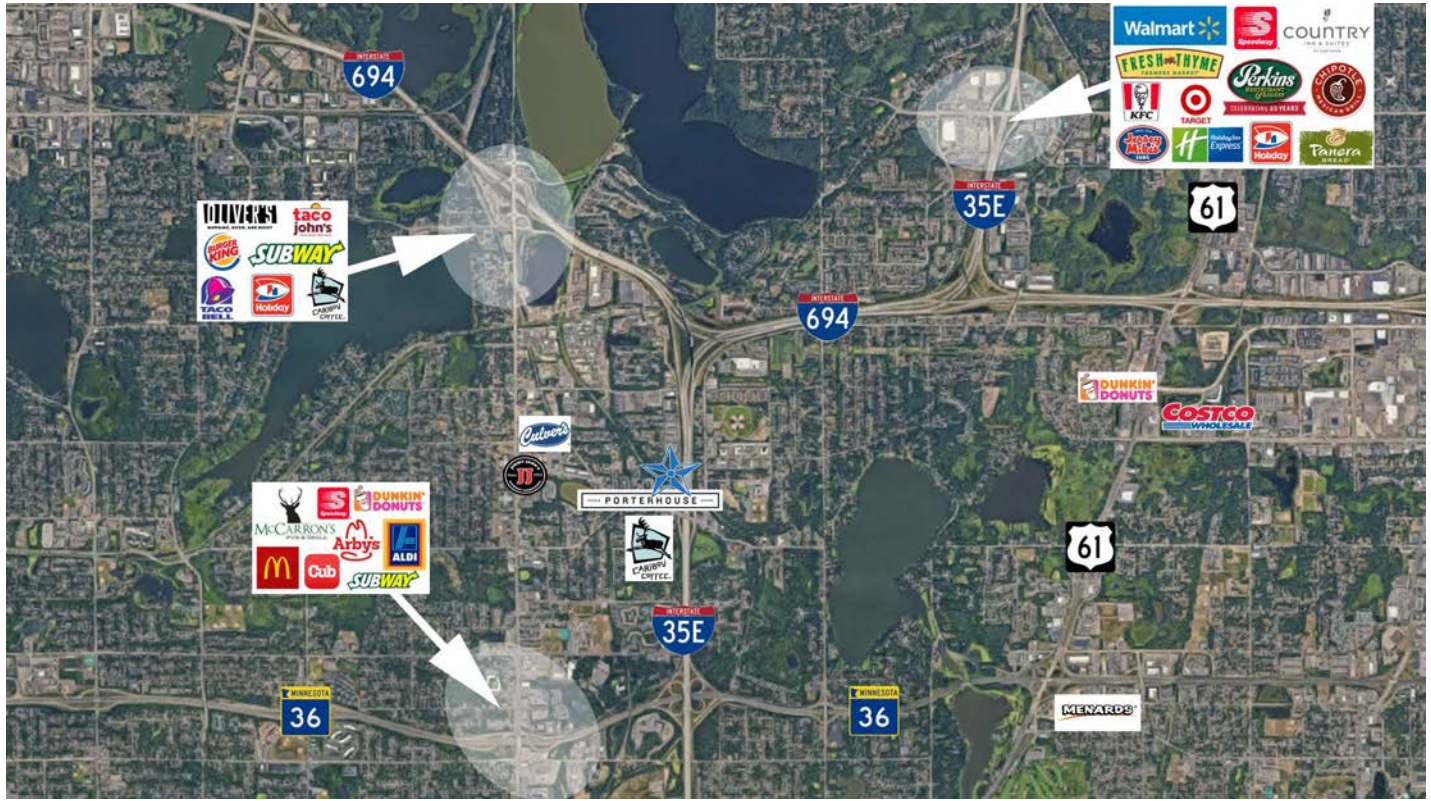
CONTACT:

WWW.ESSENCEREALESTATE.COM

JEFF NORDNESS
jeff@essencerealestate.com
(651) 341-5044

LONDON SQUARE

Little Canada Road East, Little Canada, MN 55117



ERSI

ESSENCE
REAL ESTATE
SERVICES, INC.

COMMERCIAL REAL ESTATE SINCE 1990

JEFF NORDNESS

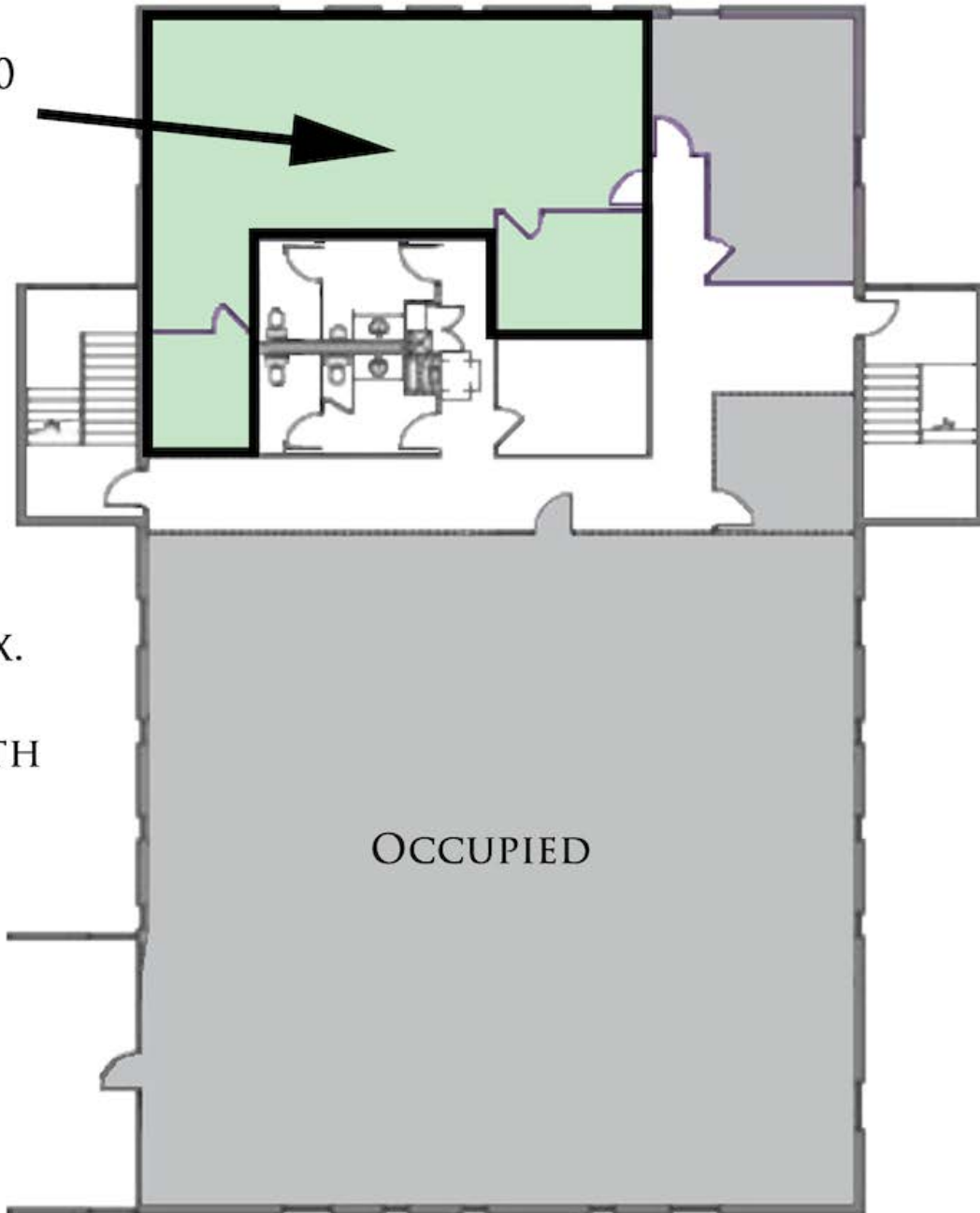
jeff@essencerealestate.com

(651) 341-5044

LONDON SQUARE

Little Canada Road East, Little Canada, MN 55117

SUITE 210
1,187 SF



APPROX.
\$1,632
A MONTH

OCCUPIED

ERSI

ESSENCE
REAL ESTATE
SERVICES, INC.

COMMERCIAL REAL ESTATE SINCE 1990

JEFF NORDNESS

jeff@essencerealestate.com

(651) 341-5044

LONDON SQUARE

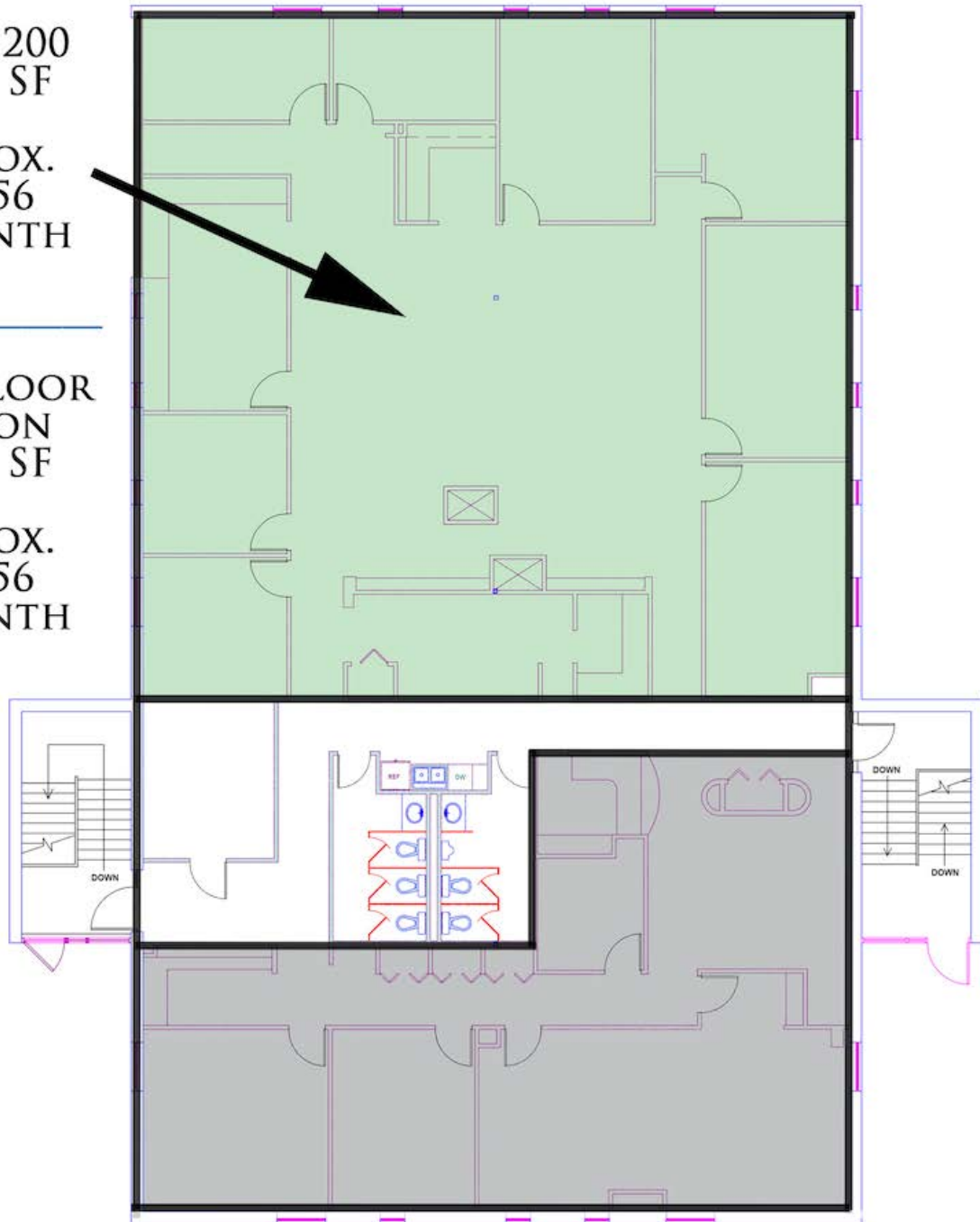
Little Canada Road East, Little Canada, MN 55117

SUITE 200
3,750 SF

APPROX.
\$5,156
A MONTH

FULL FLOOR
OPTION
6,150 SF

APPROX.
\$8,456
A MONTH



ERSI

ESSENCE
REAL ESTATE
SERVICES, INC.

COMMERCIAL REAL ESTATE SINCE 1990

JEFF NORDNESS

jeff@essencerealestate.com

(651) 341-5044