



LONDON SQUARE

219-223 LITTLE CANADA ROAD EAST, LITTLE CANADA, MN 55117

- BUILDING 219, SUITE 210: 1,187 RSF
- BUILDING 223, SUITE 200: 3,883 RSF
- BUILDING 223, SUITE 250: 2,002 RSF
- BUILDING 223, 2ND FLOOR: 5,885 RSF
- SHARED CONFERENCE ROOM THAT SEATS 20
- AMPLE PARKING
- OFFICE NET RENT: \$10.75 SF
- 2025 ESTIMATED OPERATING EXPENSE: \$7.71 SF
- GREAT ACCESS TO I-694, I-35E, AND HIGHWAY 36
- MANY AREA AMENITIES INCLUDING: GAS STATIONS, RESTAURANTS, CARIBOU COFFEE, FAST FOOD, AND MORE

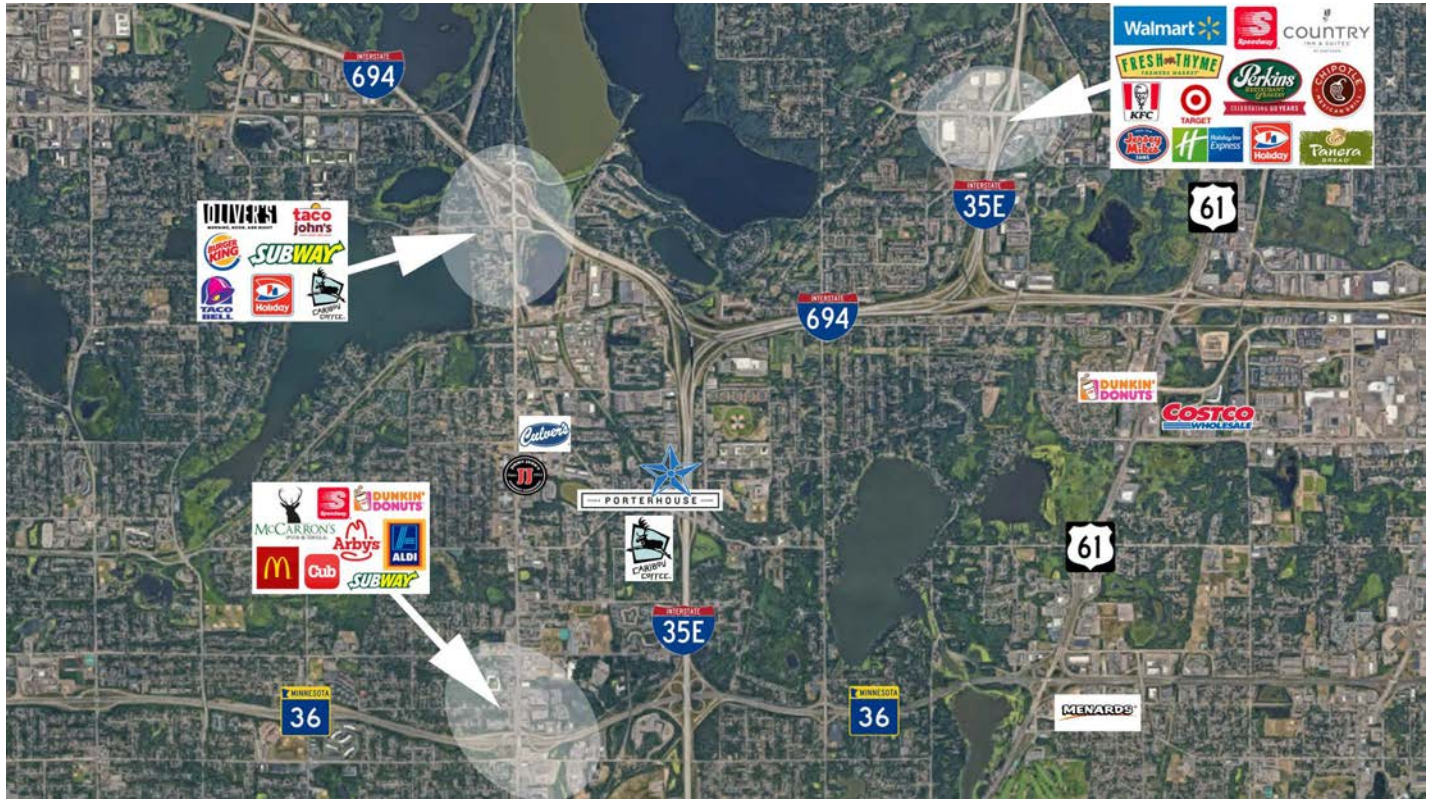
CONTACT:

WWW.ESSENCEREALESTATE.COM

JEFF NORDNESS
jeff@essencerealestate.com
(651) 341-5044

LONDON SQUARE

Little Canada Road East, Little Canada, MN 55117



ERSI

ESSENCE
REAL ESTATE
SERVICES, INC.

COMMERCIAL REAL ESTATE SINCE 1990

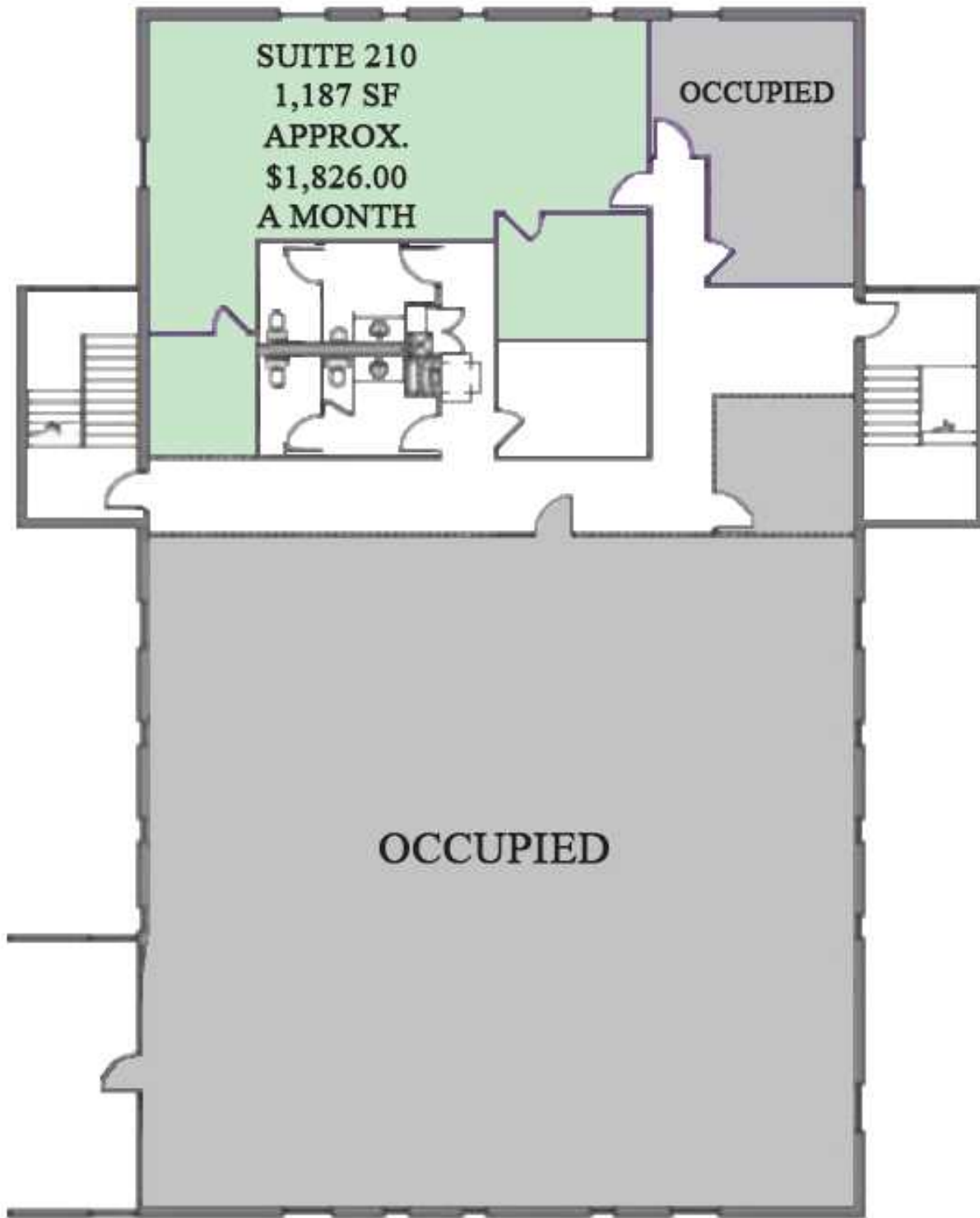
JEFF NORDNESS

jeff@essencerealestate.com

(651) 341-5044

LONDON SQUARE - 219 BUILDING

Little Canada Road East, Little Canada, MN 55117



ERSI

ESSENCE
REAL ESTATE
SERVICES, INC.

COMMERCIAL REAL ESTATE SINCE 1990

JEFF NORDNESS

jeff@essencerealestate.com

(651) 341-5044

LONDON SQUARE - 223 BUILDING

Little Canada Road East, Little Canada, MN 55117

FULL FLOOR
OPTION
5,885 RSF
APPROX.
\$9,054
A MONTH

SUITE 200
3,883 RSF
APPROX.
\$5,974.00
A MONTH

SUITE 250
2,002 RSF
APPROX.
\$3,080.00
A MONTH

ERSI

ESSENCE
REAL ESTATE
SERVICES, INC.

COMMERCIAL REAL ESTATE SINCE 1990

JEFF NORDNESS

jeff@essencerealestate.com

(651) 341-5044