



## LONDON SQUARE

219-223 LITTLE CANADA ROAD EAST, LITTLE CANADA, MN 55117

- BUILDING 219, SUITE 210: 1,187 SF AVAILABLE
- BUILDING 223, SUITE 200: 3,750 SF AVAILABLE
- ENTIRE 2ND FLOOR IN BLDG. 223: 6,150 SF AVAILABLE
- SHARED CONFERENCE ROOM
- OFFICE GROSS RENT: \$16.85 SF
- AMPLE PARKING
- GREAT ACCESS TO I-694, I-35E, AND HIGHWAY 36
- MANY AREA AMENITIES INCLUDING: GAS STATIONS, RESTAURANTS, CARIBOU COFFEE, FAST FOOD, AND MORE

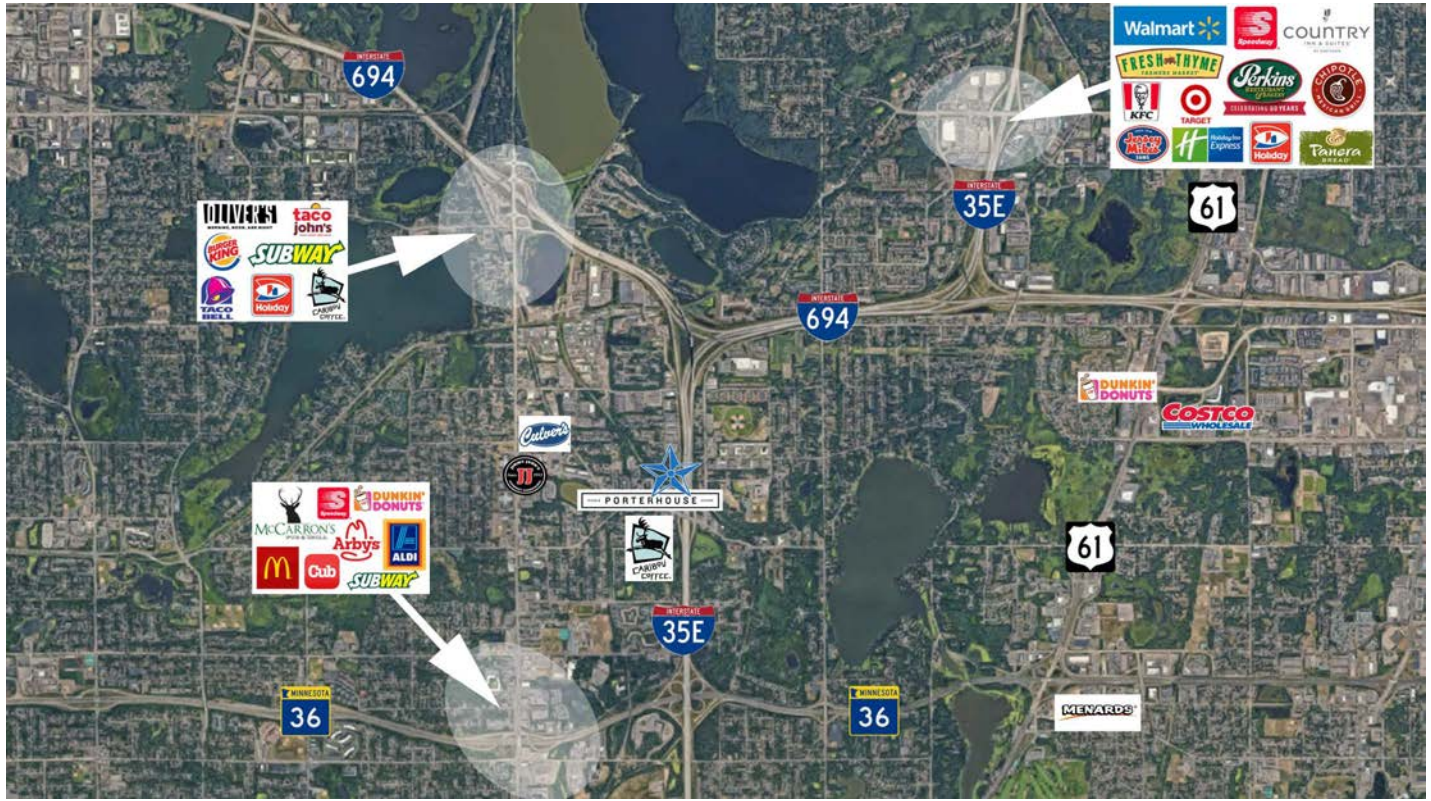
**CONTACT:**

WWW.ESSENCEREALESTATE.COM

JEFF NORDNESS  
jeff@essencerealestate.com  
(651) 341-5044

# LONDON SQUARE

Little Canada Road East, Little Canada, MN 55117



**ERSI**

ESSENCE  
REAL ESTATE  
SERVICES, INC.

COMMERCIAL REAL ESTATE SINCE 1990

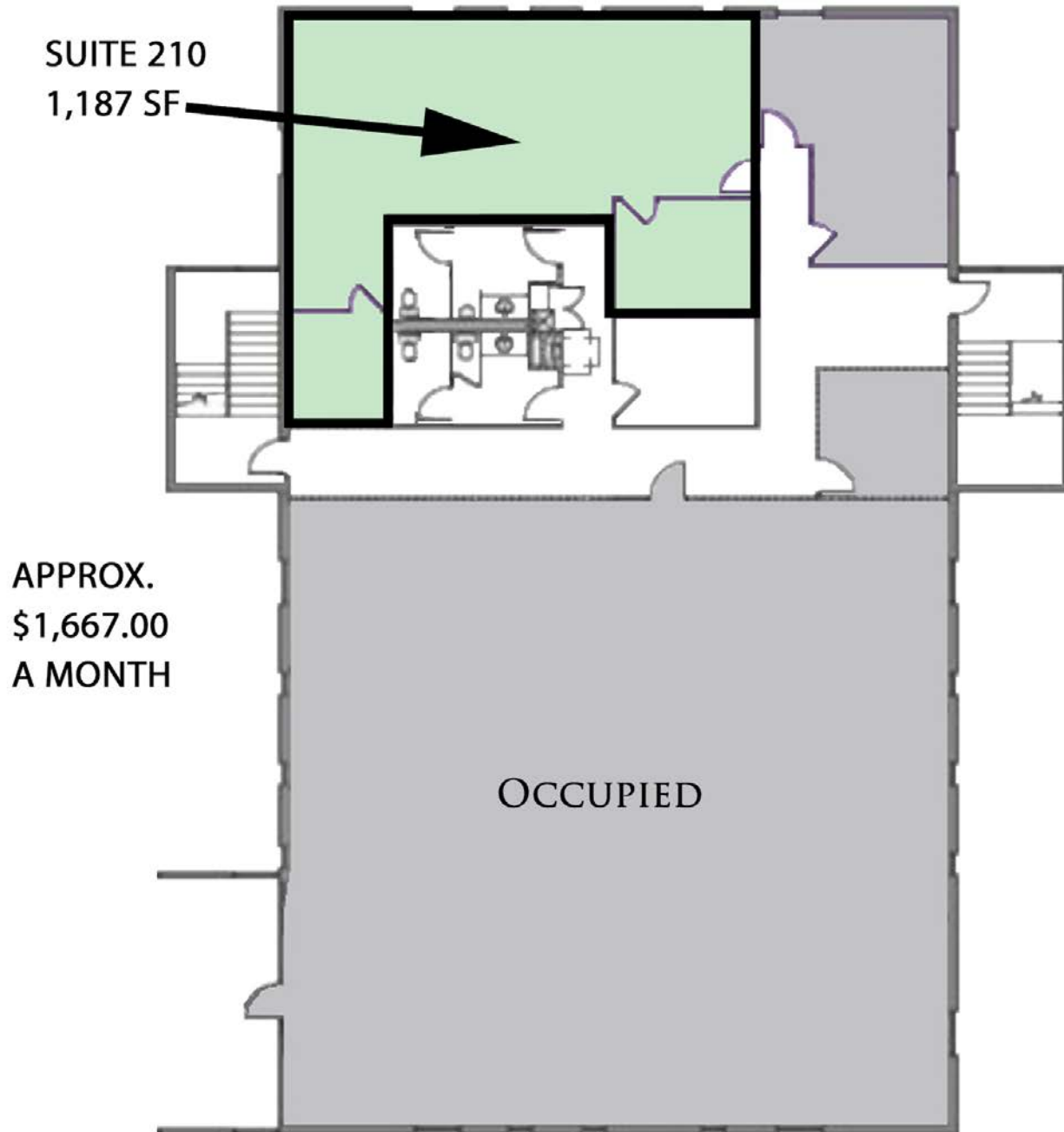
JEFF NORDNESS

jeff@essencerealestate.com

(651) 341-5044

# LONDON SQUARE

Little Canada Road East, Little Canada, MN 55117



**ERSI**

ESSENCE  
REAL ESTATE  
SERVICES, INC.

3 COMMERCIAL REAL ESTATE SINCE 1990

JEFF NORDNESS

jeff@essencerealestate.com

(651) 341-5044

# LONDON SQUARE

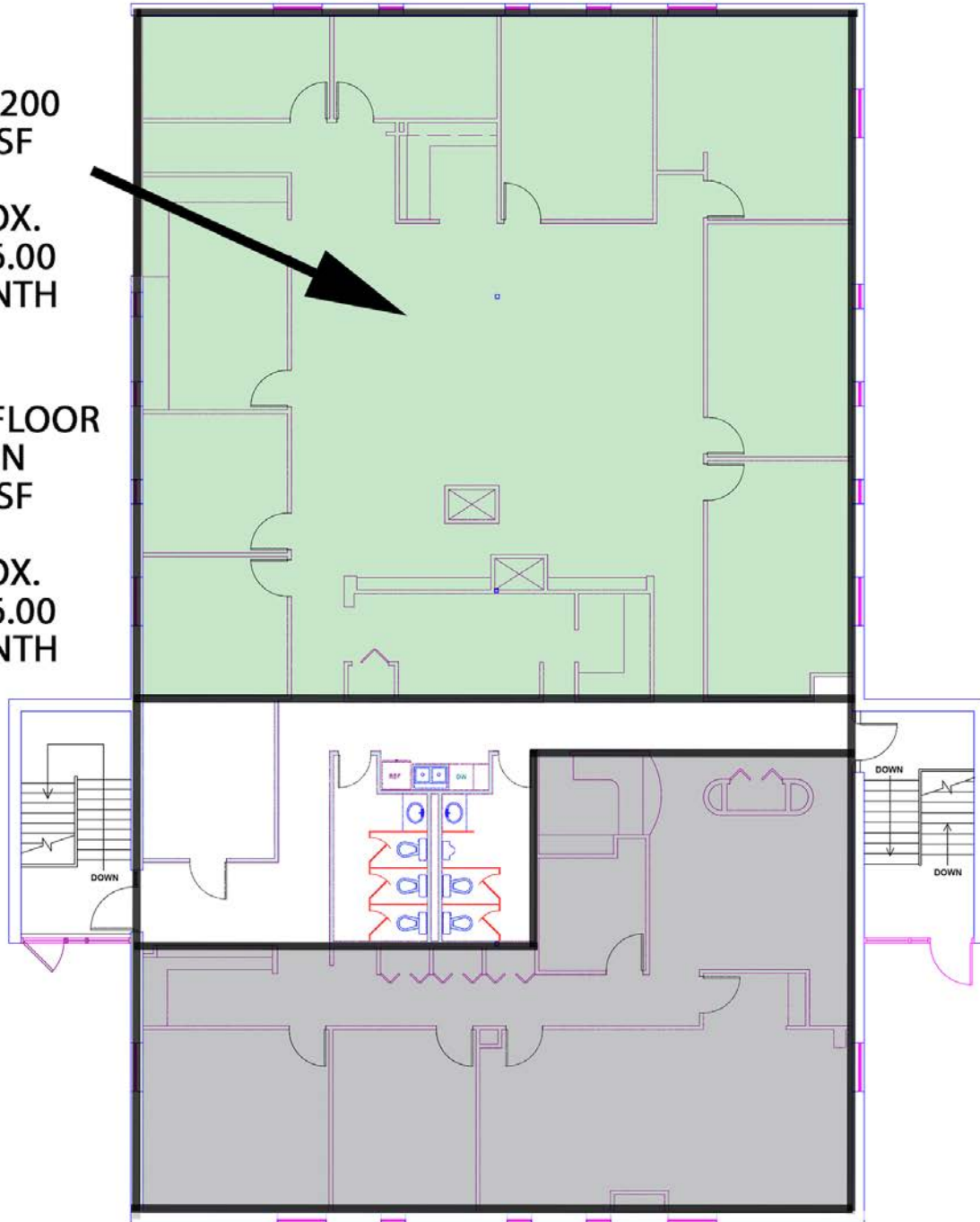
Little Canada Road East, Little Canada, MN 55117

SUITE 200  
3,750 SF

APPROX.  
\$5,266.00  
A MONTH

FULL FLOOR  
OPTION  
6,150 SF

APPROX.  
\$8,636.00  
A MONTH



**ERSI**

ESSENCE  
REAL ESTATE  
SERVICES, INC.

COMMERCIAL REAL ESTATE SINCE 1990

JEFF NORDNESS

jeff@essencerealestate.com

(651) 341-5044