



SHOREVIEW PROFESSIONAL CENTER

4570 CHURCHILL STREET, SHOREVIEW, MN 55126

- 867 SF AVAILABLE, SUITE 130
- 2,250 SF AVAILABLE, SUITE 200
- SUB LEASE THROUGH MAY 2026
- IDEAL FOR OFFICE, SERVICE, OR MEDICAL
- PROFESSIONALLY OWNED AND MANAGED
- OFFICE NET RENT: \$13.42 - \$13.50 SF
- 2025 EST. OPERATING: \$12.20 SF
- SUPERB ACCESS TO HWY. 96
BETWEEN I-35E AND I-35W
- MANY AREA AMENITIES:
KOWALSKI'S, SHORE 96, CHURCHILL ST. RESTAURANT, SUBWAY, RAMSEY COUNTY LIBRARY, SHOREVIEW COMMUNITY CENTER, AND MORE

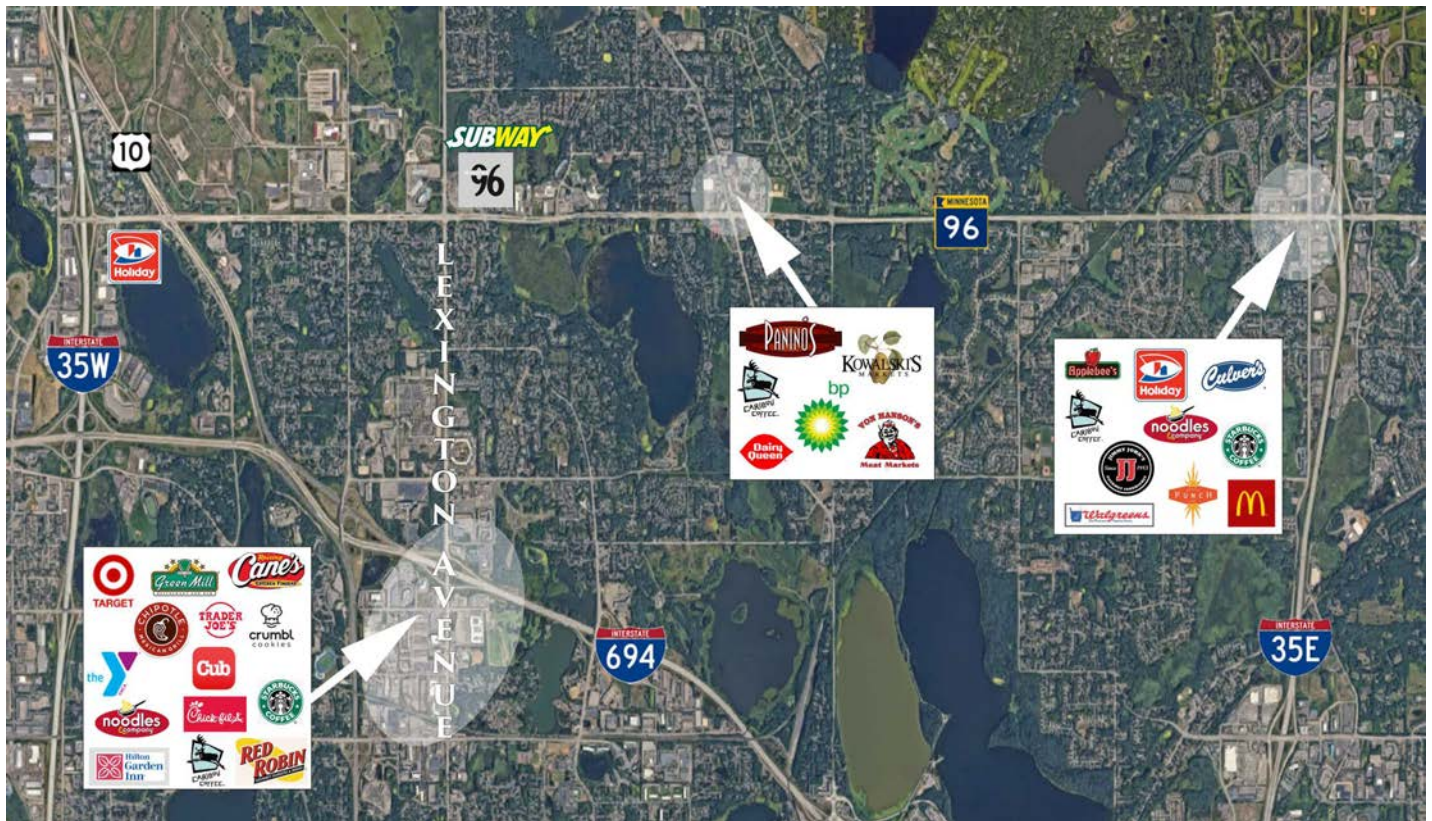
CONTACT:

WWW.ESSENCEREALESTATE.COM

JEFF NORDNESS
jeff@essencerealestate.com
(651) 341-5044

SHOREVIEW PROFESSIONAL CENTER

4570 Churchill Street, Shoreview, MN 55126



ERSI

ESSENCE
REAL ESTATE
SERVICES, INC.

COMMERCIAL REAL ESTATE SINCE 1990

JEFF NORDNESS

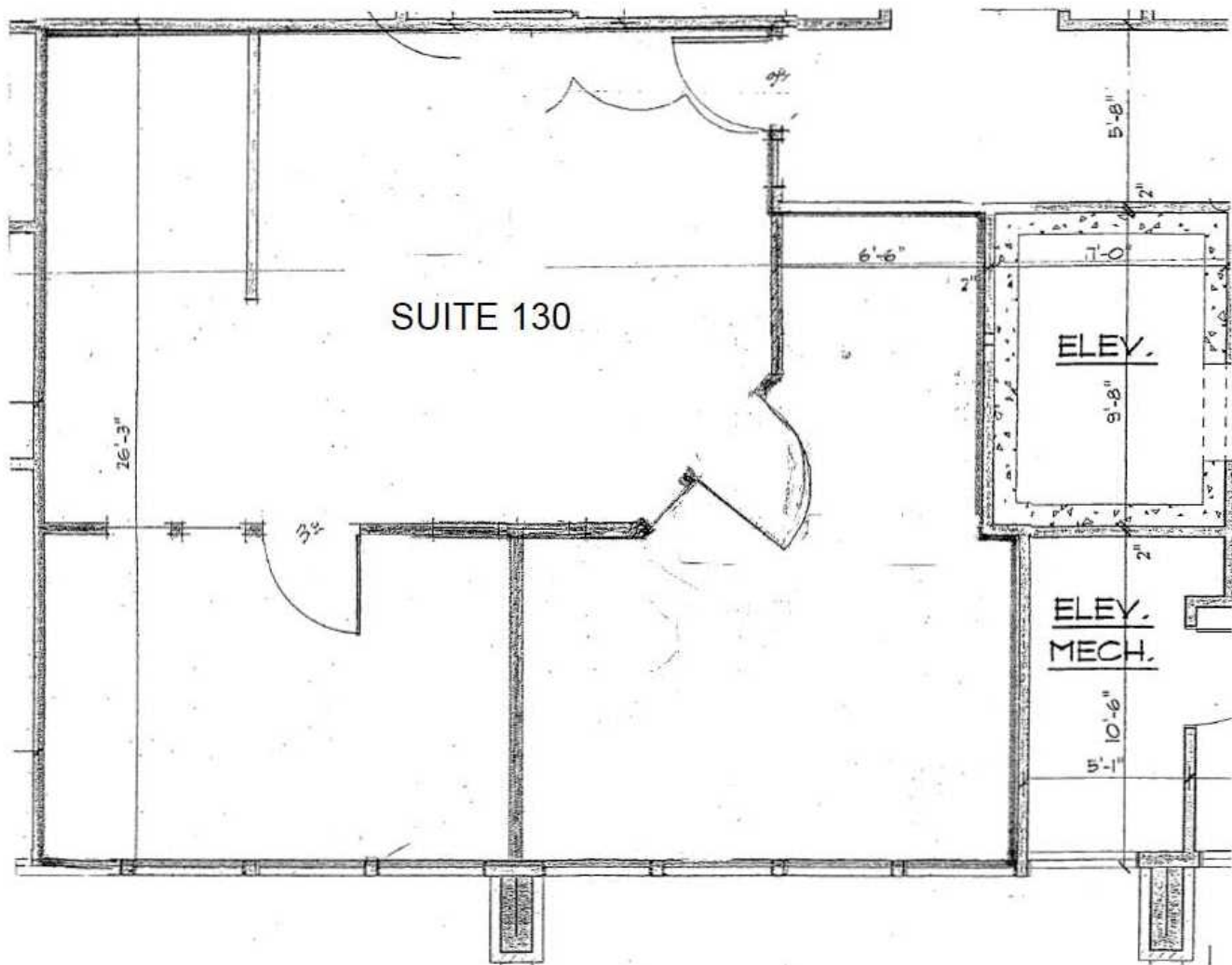
jeff@essencerealestate.com

(651) 341-5044

FLOOR PLAN

4570 Churchill Street, Shoreview, MN 55126

THE ESTIMATED MONTHLY COST FOR SUITE 130, 867 SF IS \$1,857.00



ERSI

ESSENCE
REAL ESTATE
SERVICES, INC.

3 COMMERCIAL REAL ESTATE SINCE 1990

JEFF NORDNESS

jeff@essencerealestate.com

(651) 341-5044

FLOOR PLAN

4570 Churchill Street, Shoreview, MN 55126

THE ESTIMATED MONTHLY COST FOR SUITE 200, 2,250 SF IS \$4,804.00

