



## HUGO LAND

12101 FOREST BOULEVARD NORTH, HUGO, MN 55110

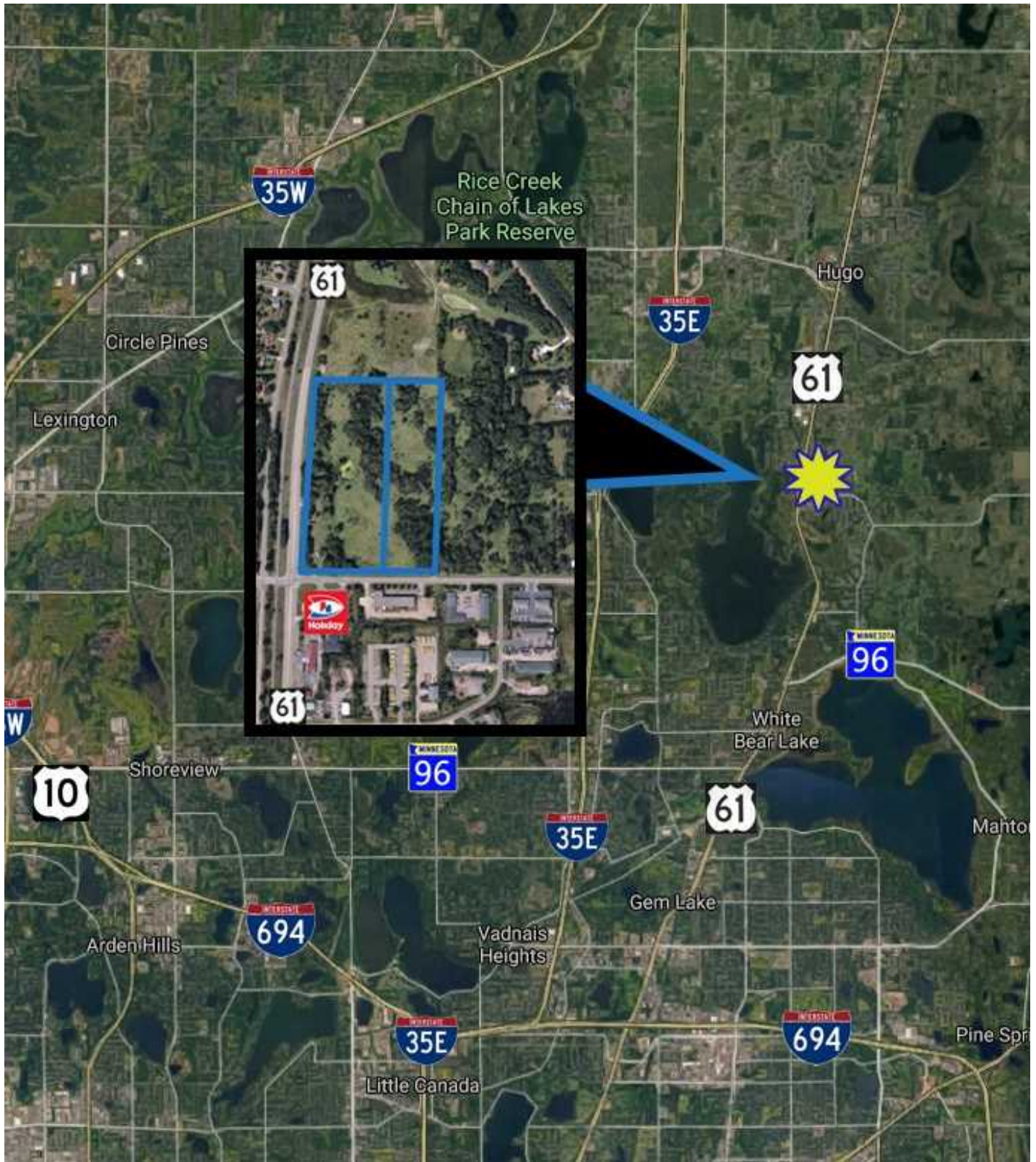
- SALE PRICE: \$876,000.00
- TAXES 2024: \$3,548.00
- PID: 31.031.21.44.0001
- TWO BUILDABLE AREAS:  
AREA #1: 2.94 ACRES AND  
AREA #2: 1.363 ACRES
- TOTAL AREA INCLUDING  
WETLANDS IS 25.22 ACRES
- AREA #1: LOCATED ON THE CORNER  
OF HIGHWAY 61 AND COUNTY J  
(120TH STREET NORTH)
- AREA #2: LOCATED EAST OF  
HIGHWAY 61 ON COUNTY J
- FLEXIBLE PUD ZONING
- PERFECT FOR OFFICE, RETAIL,  
MEDICAL, OR SERVICE

## CONTACT:

JEFF NORDNESS  
jeff@essencerealestate.com  
(651) 341-5044

# HUGO LAND

12101 Forest Boulevard North, Hugo, MN 55110



**ERSI**

ESSENCE  
REAL ESTATE  
SERVICES, INC.

COMMERCIAL REAL ESTATE SINCE 1990

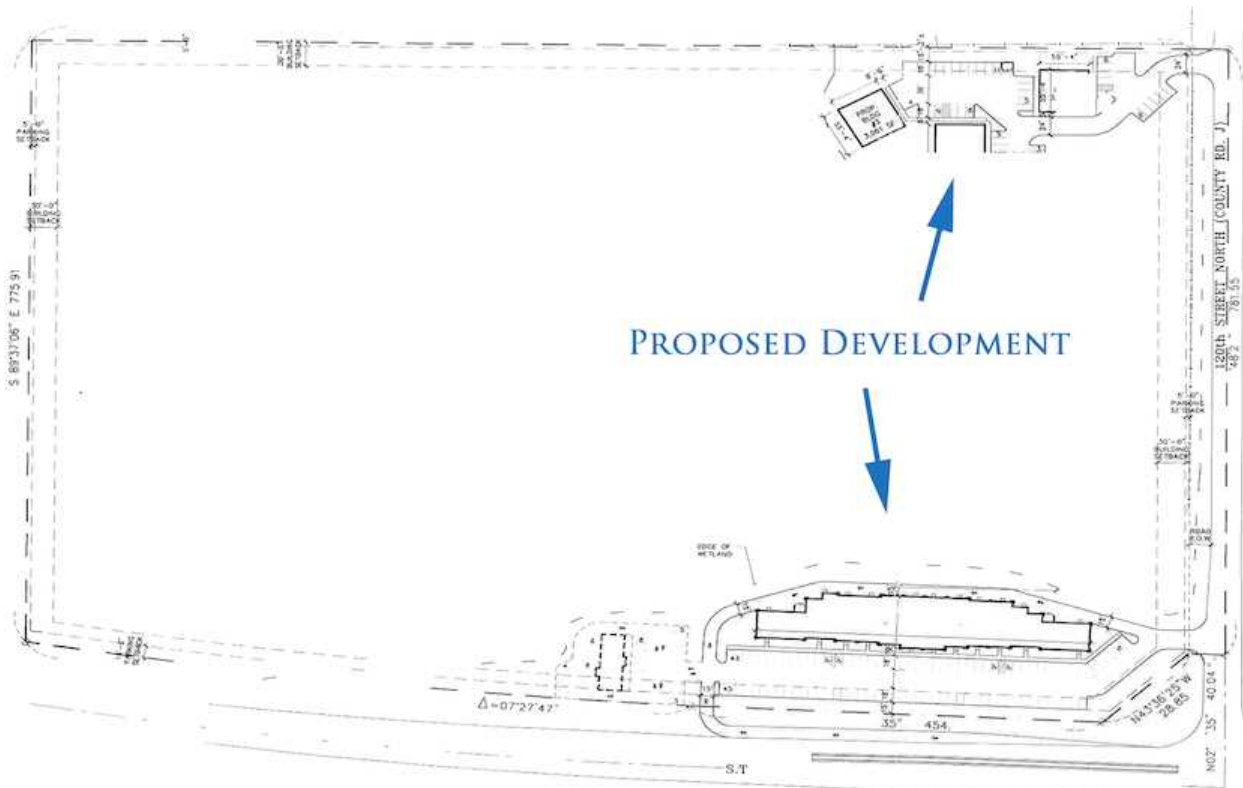
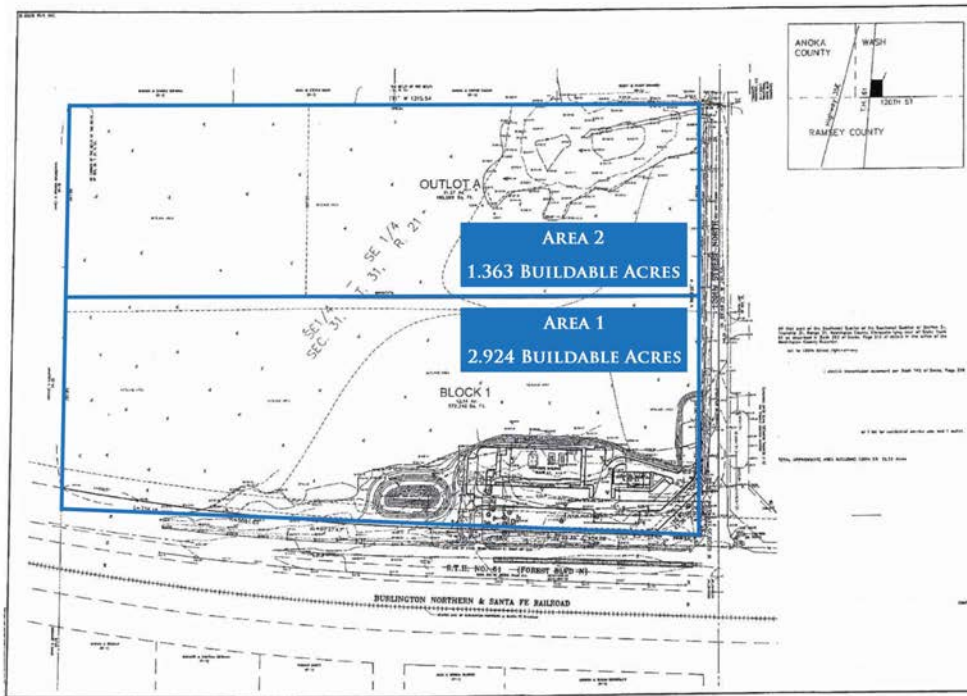
JEFF NORDNESS

[jeff@essencerealestate.com](mailto:jeff@essencerealestate.com)

(651) 341-5044

# HUGO LAND

12101 Forest Boulevard North, Hugo, MN 55110



**ERSI**

ESSENCE  
REAL ESTATE  
SERVICES, INC.

COMMERCIAL REAL ESTATE SINCE 1990

JEFF NORDNESS

jeff@essencerealestate.com

(651) 341-5044