



RICE CREEK PROFESSIONAL BUILDING

5985 RICE CREEK PARKWAY, SHOREVIEW, MN 55126

- 2,240 SF - 7457 SF AVAILABLE UP TO 4,832 SF CONTIGUOUS
- GREAT CORNER SPACES
- TWO STORY OFFICE BUILDING WITH ABUNDANT WINDOWS AND 9' CEILING
- JUST EAST OF MEDTRONIC OFFICE PARK
- MONUMENT SIGNAGE AVAILABLE
- EASY ACCESS TO I-35W, CTY. 96, US 10, AND I-694
- AREA AMENITIES INCLUDE RESTAURANTS, HOTEL GAS STATION, AND MORE
- OFFICE NET RENT: \$13.00 SF
- 2024 EST. OPERATING EXP.: \$12.36

CONTACT:

WWW.ESSENCEREALESTATE.COM

JEFF NORDNESS
jeff@essencerealestate.com
(651) 341-5044

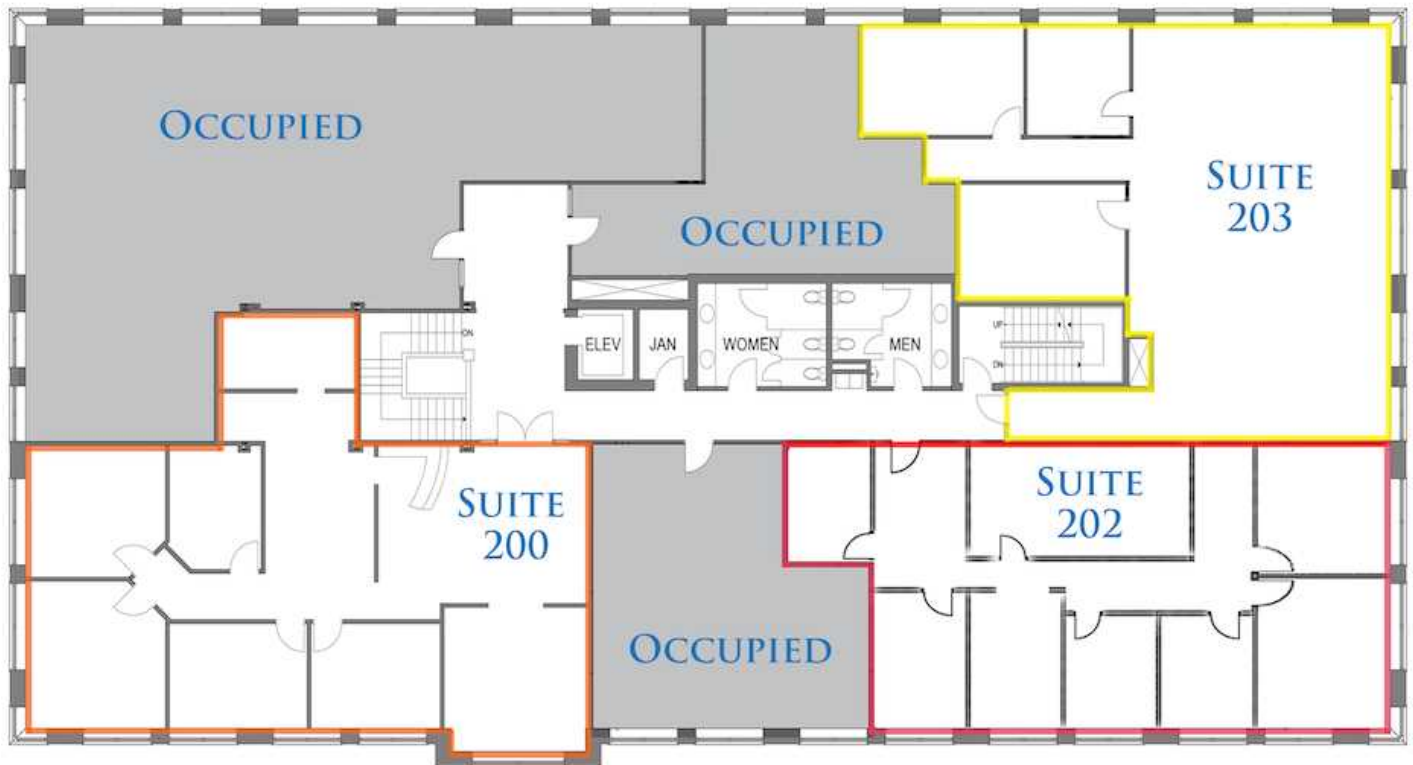
RICE CREEK BUSINESS MAP

5985 Rice Creek Parkway, Shoreview, MN 55126



RICE CREEK PROFESSIONAL BUILDING

5985 Rice Creek Parkway, Shoreview, MN 55126



SUITE 200	2,625 SF	➤ 4,832 SF CONTIGUOUS
SUITE 202	2,240 SF	
SUITE 203	2,592 SF	

ERSI

ESSENCE
REAL ESTATE
SERVICES, INC.

3 COMMERCIAL REAL ESTATE SINCE 1990

JEFF NORDNESS

jeff@essencerealestate.com

(651) 341-5044