

MAIN STREET POST OFFICE BLDG.

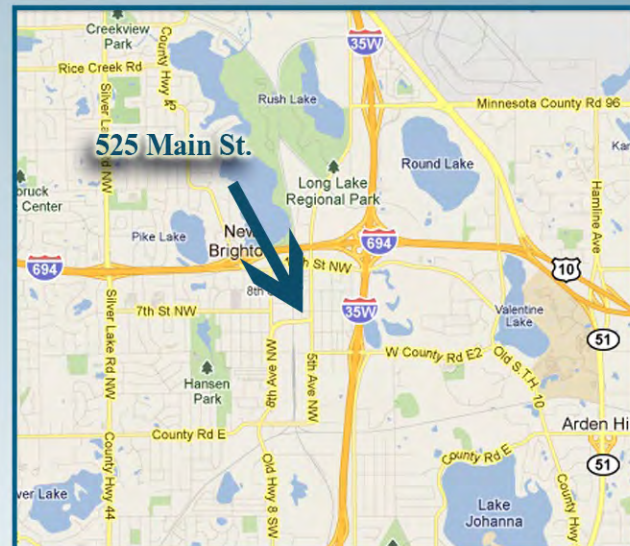
525 MAIN STREET, NEW BRIGHTON MN 55112

FOR LEASE

NEXT DOOR TO THE CHAMBER OF COMMERCE!



- 1,430 - 2,843 SF Available Space
- Perfect for Medical, Office, or Retail
- Superb Access to I35W and I694
- End Cap with Glass on Three Sides
- Great Visibility to 5th Avenue (old Hwy 8)
- Surrounded by Industrial, Retail, Office, and Residential Properties
- 125 Condo Units Adjacent (directly behind building) with 100% Occupancy
- Next to the Twin Cities North Chamber of Commerce



ERSI

*ESSENCE
REAL ESTATE
SERVICES INC*

(651) 482-1871

www.essencerealestate.com

Commercial / Industrial Brokers / Consultants

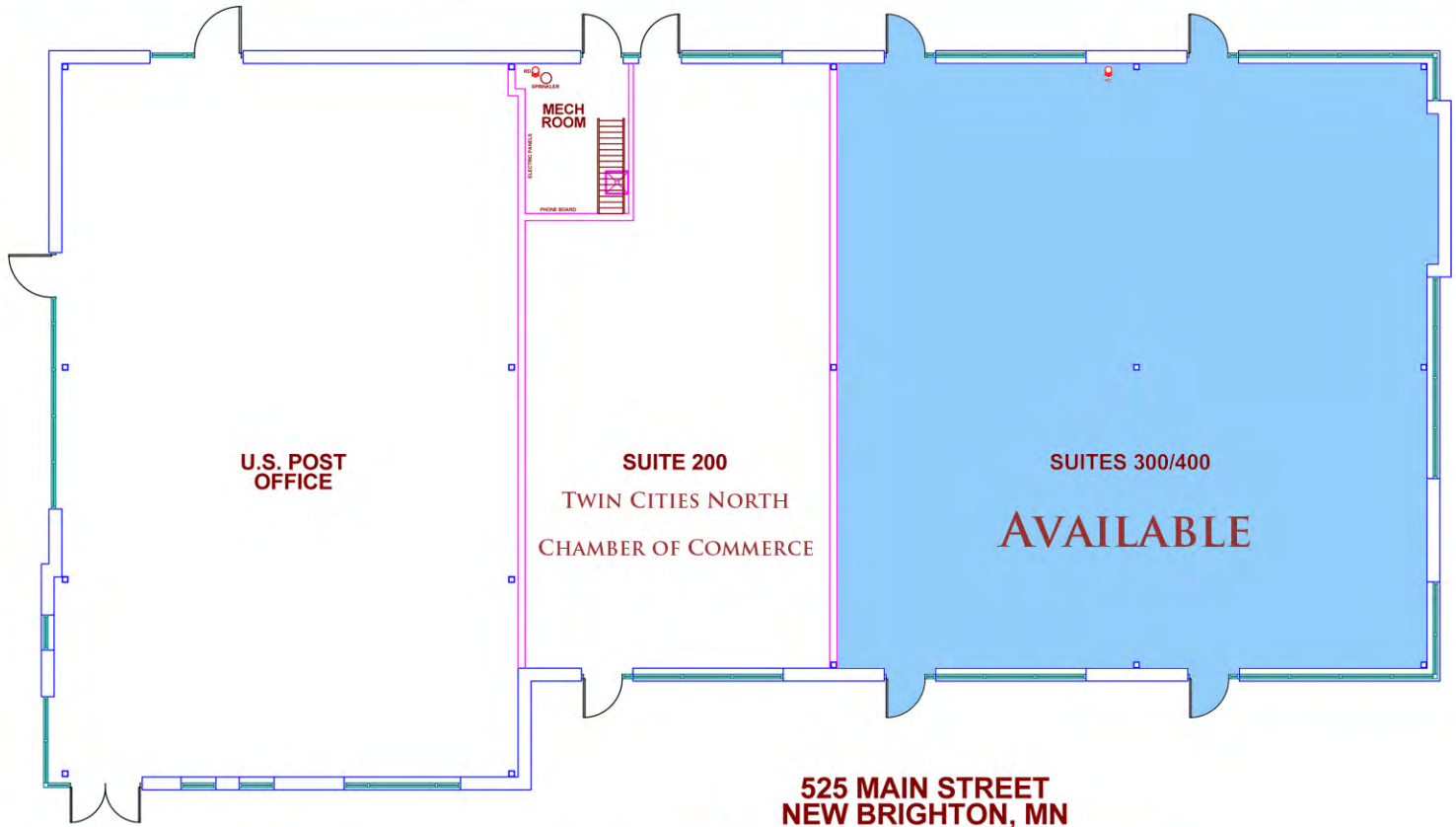
Information deemed reliable however not guaranteed. Property may be withdrawn from market at anytime without notice.

MAIN STREET POST OFFICE BLDG.

525 MAIN STREET, NEW BRIGHTON MN 55112

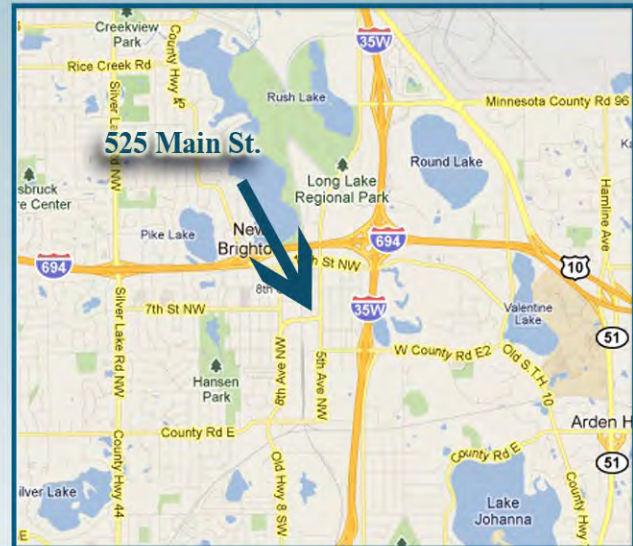
FOR LEASE

GREAT FOR OFFICE, SERVICE, OR RETAIL



525 MAIN STREET
NEW BRIGHTON, MN

1,430 - 2,843 SF available space



ERSI

*ESSENCE
REAL ESTATE
SERVICES INC*

(651) 482-1871

www.essencerealestate.com

Commercial / Industrial Brokers / Consultants

Information deemed reliable however not guaranteed. Property may be withdrawn from market at anytime without notice.