

WILLOW LAKE OFFICE

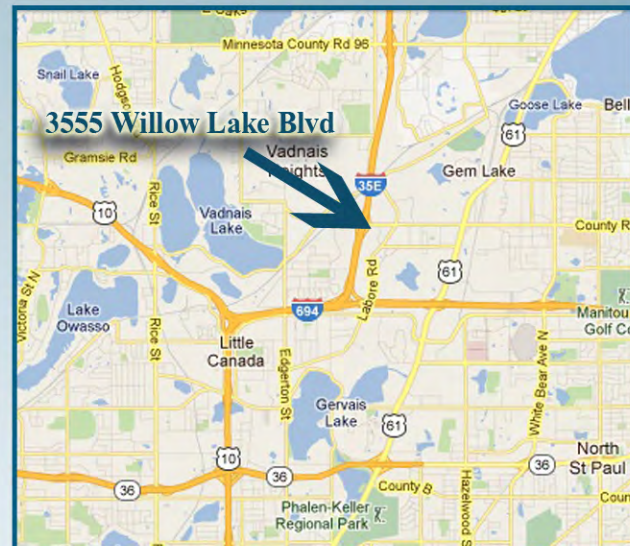
3555 WILLOW LAKE BLVD, VADNAIS HEIGHTS, MN 55110

FOR LEASE

EXCEPTIONAL CLASS A BUILDING



- 3000 SF Available Space
- Great Access to I35E, I694, Hwy 36, Hwy 61, Cty. Rd. 96
- Perfect for Medical, Office, or Service
- Attractive Entrance and Spectacular Aesthetic Appeal
- Corner Space With Phenomenal Glass Line
- Many Area Amenities Including: Festival, Target, Wal-Mart, Holiday Inn Express, Jimmy's Grille & Banquet Exceptional, The Vadnais Sports Complex and Other Retail Stores



*ESSENCE
REAL ESTATE
SERVICES INC*

(651) 482-1871

www.essencerealestate.com

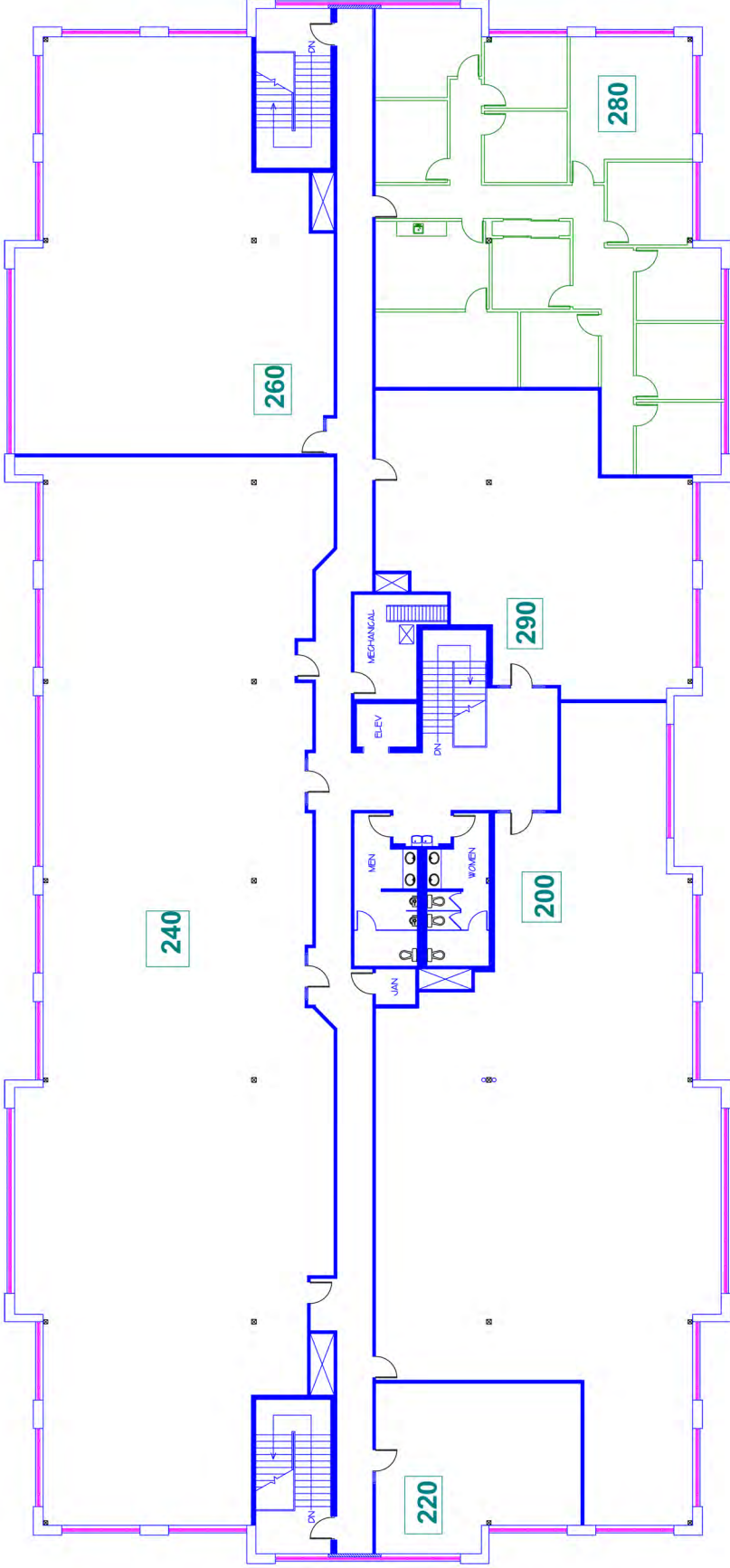
Commercial / Industrial Brokers / Consultants

Information deemed reliable however not guaranteed. Property may be withdrawn from market at anytime without notice.



ESSENCE
REAL ESTATE
SERVICES INC

Second floor availability 2993 SF
Call for Details! (612)-788-1552



SECOND FLOOR PLAN
3555 WILLOW LAKE BOULEVARD
VADNAIS HEIGHTS, MN